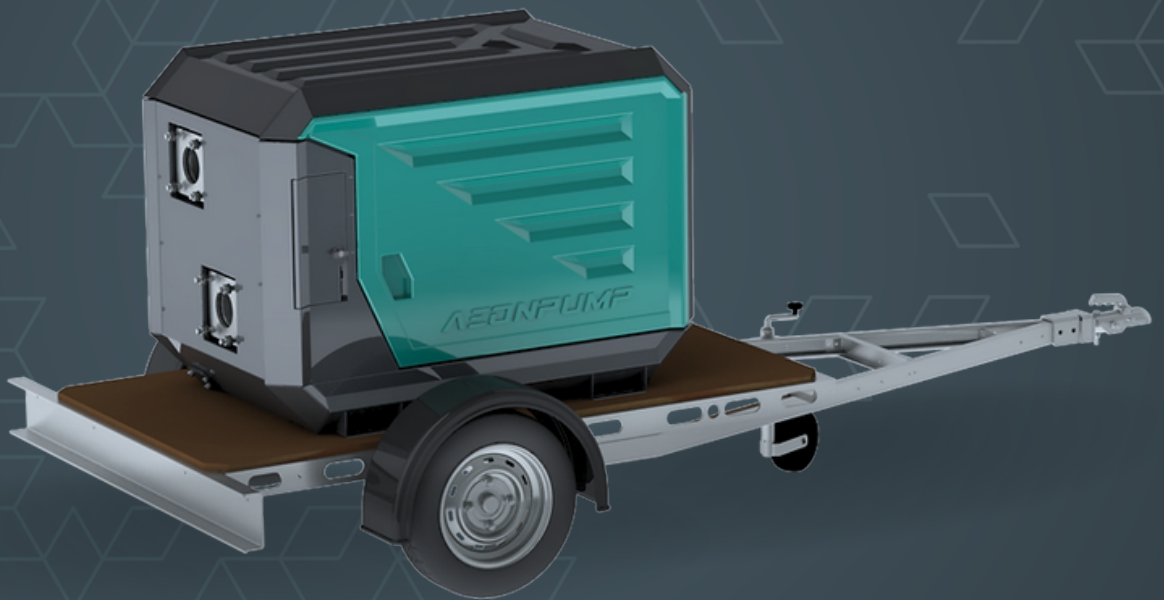


**AEDONPUMP**

# RAPTOR 4D LITE



**DIESEL**

**DRIVEN SEWAGE  
AND DEWATERING PUMP**

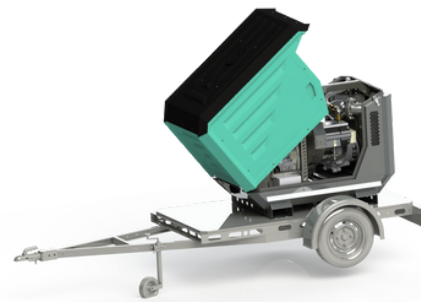
## FEATURES AND COMPETITIVE EDGE

Type: **Raptor 4D Lite**  
Connection size: **4"**

Frame LxBxH: **1399x907x1076 mm**  
Dry weight: **550 kg**  
Fuel tank capacity: **50 L**  
Sound level: **53 dB (at 10 m)**

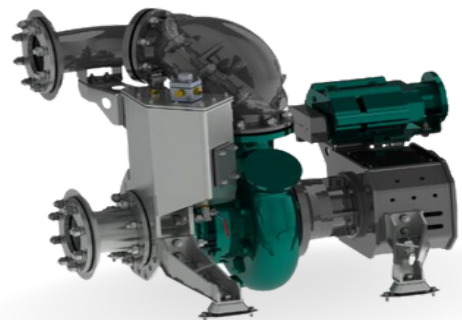
**Designed for heavy duty applications.**  
**Sewage bypass, drainage and dewatering:**

- Extended maintenance intervals;
- High-grade parts of superior quality;
- Online telemetry and remote access capability;
- Unsurpassed efficiency values that set the industry standard.



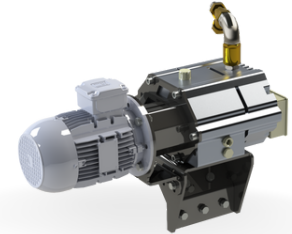
## PUMP TECHNICAL SPECIFICATION

**Pump** Max. flow: **115 m<sup>3</sup>/h**  
Max. pressure: **21 m**  
Impeller type: **Screw impeller**  
Solids handling: **75 mm**  
Temperature: **max. 40°C**  
Casing: **GG25 (0.6025)**  
Impeller: **GGG60 (0.7060)**  
Suction Liner: **GG20 (0.6020)**  
Wear ring: **GG20 (0.6020)**  
Shaft: **1.4021**  
Shaft sealing: **WC/SiC/NBR**  
O-Rings: **NBR**  
Suction liner adjustable by external regulation screws





**Priming System** Pump type: **dry claw vacuum pump**  
Air handling capacity: **60 m<sup>3</sup>/h**  
Max. vacuum: **9.0 m**  
Floatbox: **Hot dip galvanized Steel**  
Non-return valve: **Ductile iron GJS400**  
Check valve ball: **Rubber NBR**  
Maintenance interval: **10 000 mH**



## ENGINE OPTIONS

**Standard** Model: **Hatz 1D81**  
Cylinders: **1**  
Displacement litres: **0.667**  
Bore and stroke mm: **100 x 85**  
Maximum power: **5.5 kW @1700 rpm**  
Variable speed: **1500 - 1700 rpm**  
Maximum torque: **21Nm @3000 rpm**  
Combustion system: **High Pressure Mechanical Direct Injection**  
Emission standard: **StageV**





### FRAME OPTIONS

**Silent canopy** Canopy type: **Non-stackable**  
Dimensions LxWxH: **1399x907x1076 mm\***  
Lifting point: **Single lifting point**  
Forklift pockets: **Installed**

\*Trailer is not included

\*\*Pump is designed to be installed on the trailer



---

**Trailer** On request



---

**Lifting Hook** On request



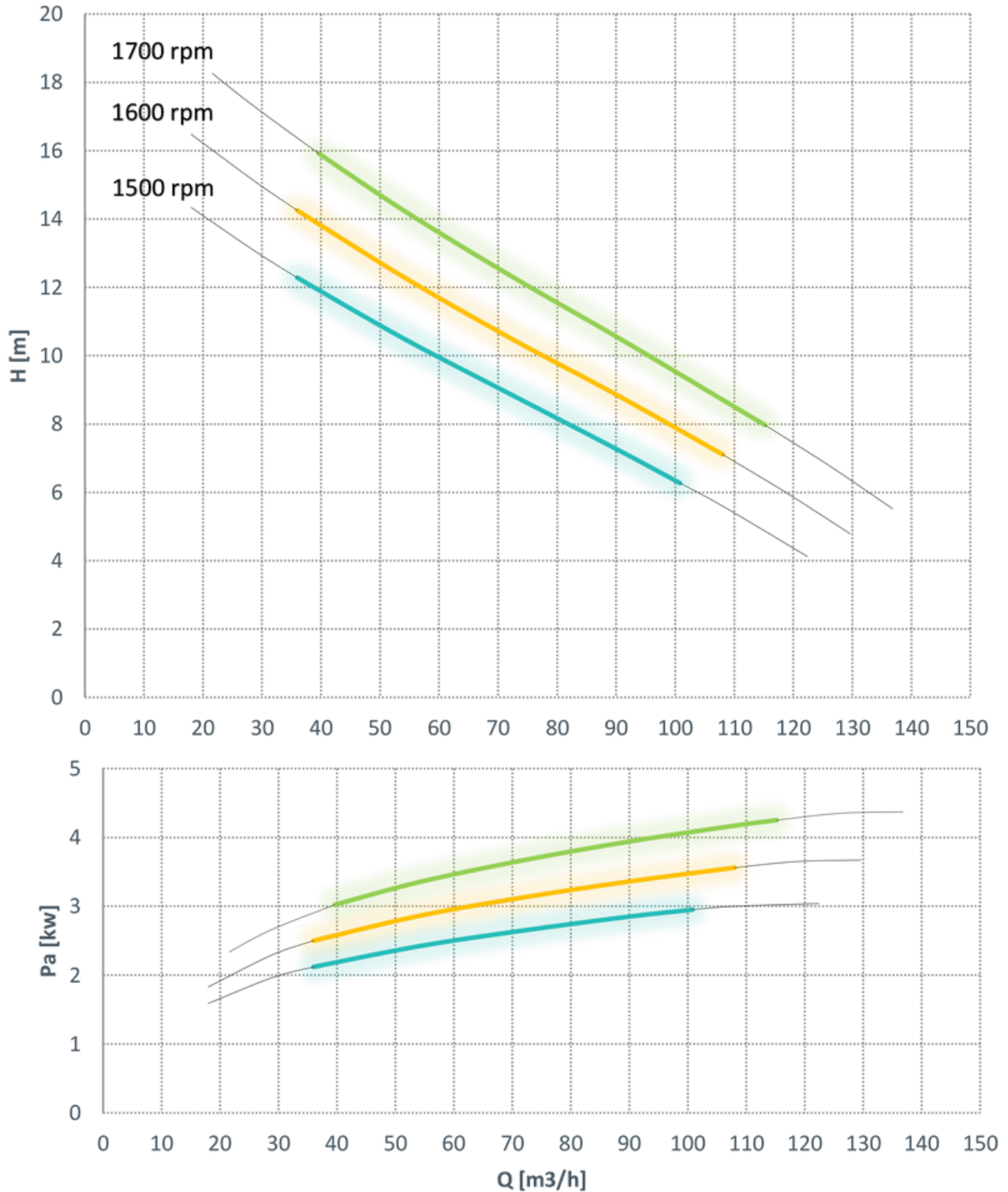
### CONTROL PANEL OPTIONS

**Standard** Ignition switch  
Hour meter  
Oil pressure indicator  
Battery indicator  
Dual float switch





Curves at speeds 1500 till 1700 rpm  
(Testing according ISO 9906:2012-38)



Note: Pump power P include mechanical seal friction and bearing frame losses, from a run in bearing frame.